

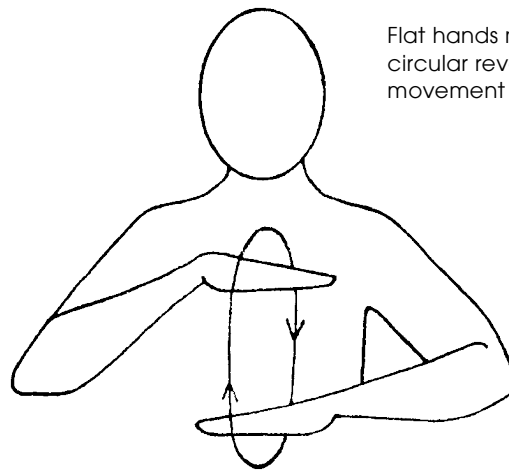
Sign of the Week

14th – 20th May 2018

This week's sign is Patient!

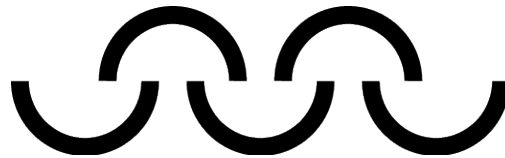
Join in with our Sign of the Week. Make and share your own video using the hashtag #wetalkmakaton to appear on our video wall on wetalkmakaton.org

Patient



Flat hands make inward circular revolving movement

Patient



We have provided you with these signs and/or symbols free of charge. With your help The Makaton Charity can help more people communicate, please donate online at justgiving.com/makaton.

Makaton Symbols and Signs graphics © The Makaton Charity 2018 makaton.org

© The Makaton Charity 2016

Let's talk Makaton

The Makaton Charity
Westmead House
Farnborough
Hampshire GU14 7LP

01276 606760
info@makaton.org
makaton.org

A Charitable Company Limited by Guarantee. Registered in England and Wales. Registered Offices: 66 Lincoln's Inn Fields, London WC2A 3LH. Registered Charity No. 1119819. Registered Company No. 06280108.